

Garden Highlights, June 2022



Hellebores enjoy shade in summer and some sunshine in winter. Their ideal location is under a deciduous tree.

Don't only admire this flower. Look at the two outer leaflets that have been described as 'pouched on their lower side like a pelican's bill'.

On the island of Corsica this plant grows on the shore, on roadsides, in woodland, on exposed mountain-tops and in maquis scrub, where it can reach 1.8 m high.

This **Corsican Hellebore *Helleborus lividus* subsp. *corsicus*** has a synonym: *Helleborus argutifolius*.

The botanical name *Helleborus* comes from Greek words, *bora* meaning food and *helein* meaning injures or destroys. The leaves, stems and roots of Hellebores are poisonous to humans if eaten.

Discourage children from eating any plants, except those served as food.

Over page: Map showing plant locations

What's On in June 2022

Winter Lecture Program via Zoom, weekly on Thursdays, begins 2 June 11:00am - 12:00 pm. Book for the series.

Guided Walk: '**Our Plant Heritage from Gondwana**' Sunday 12 June 2:00 pm, gold coin donation.

Discovery Table:

Sunday 19 June 1:00 - 3:00 pm.

Two Botanic Art workshops.

See Friends website for details:

Drawing in Graphite and Coloured Pencil, weekend 25 and 26 June.

Realistic Renderings with Coloured Pencil, weekend 2 and 3 July.

Free Guided Walks:

Wednesdays 11 am, Sundays 2 pm.

Friends Nursery open:

Wednesdays 9:30 am - 12:30 pm.

The Conservatory is open:

10 am - 4 pm every day.

The **Tea House** is closed for renovation. It is planned to be open again in summer.

The Curiosity Cabinet:

displays plants from arid areas.

(For more details about What's On: Friends website or phone.)

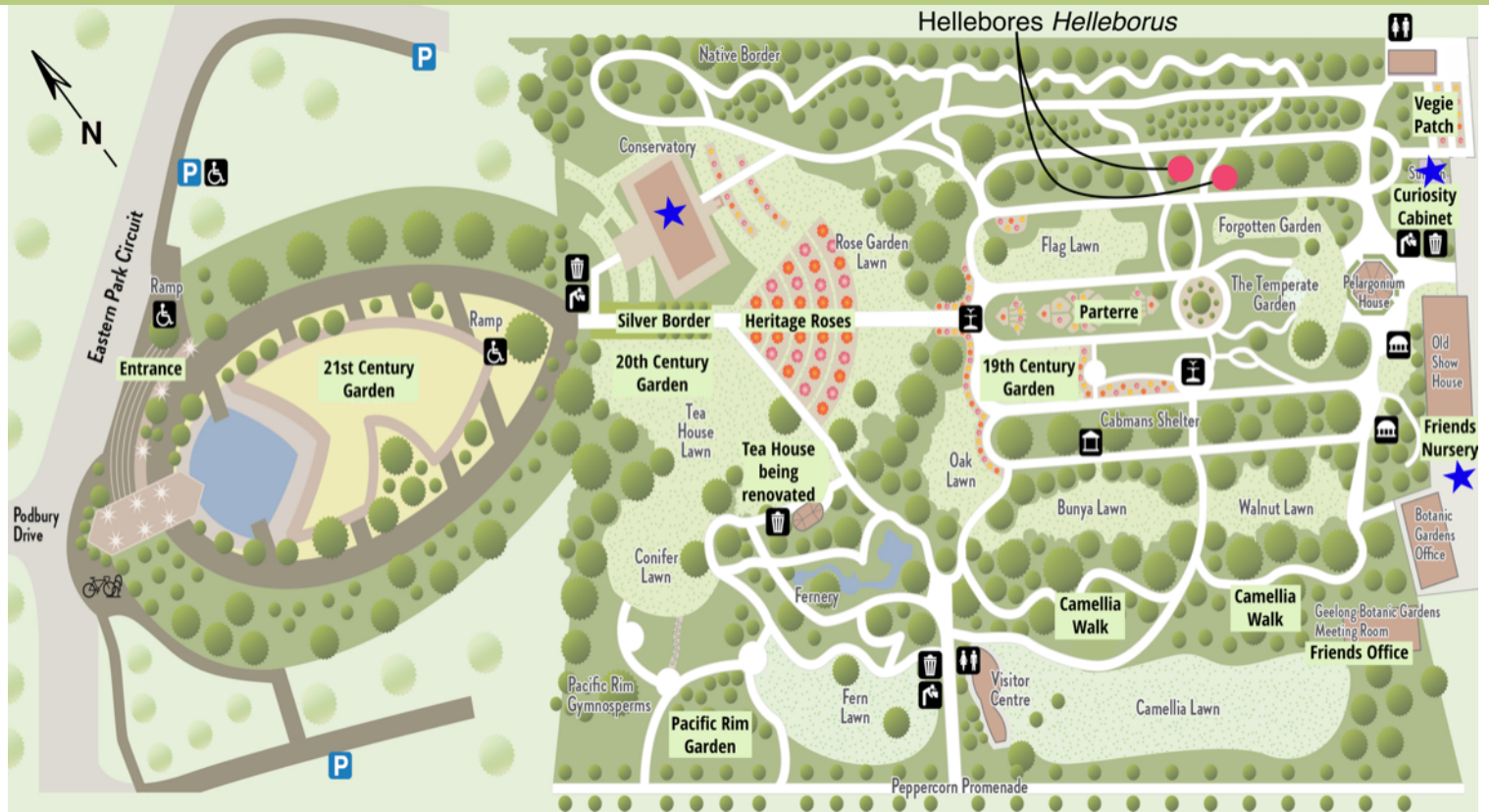
Bookings: www.friendsgbg.org.au

Phone: 5222 6053

www.geelongaustralia.com.au/gbg/



Geelong Botanic Gardens map



www.friendsgbg.org.au
www.geelongaustralia.com.au/gbg/

This information was developed by the Volunteer Guides
 Friends of Geelong Botanic Gardens.

